

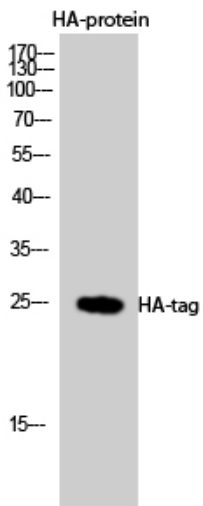


HA-tag Polyclonal Antibody

Catalog No	YP-Ab-04400
Isotype	IgG
Reactivity	Species independent
Applications	WB;ELISA;IP;ELISA
Gene Name	HA Tag
Protein Name	HA-Tag
Immunogen	HA synthetic peptide conjugated to KLH.
Specificity	HA-tag Polyclonal Antibody detects HA-tagged recombinant proteins or HA-tagged proteins overexpressed in cells.
Formulation	Liquid in PBS containing 50% glycerol, 0.5% BSA and 0.05% sodium azide.
Source	Polyclonal, Rabbit,IgG
Purification	The antibody was affinity-purified from rabbit antiserum by affinity-chromatography using epitope-specific immunogen.
Dilution	Western Blot: 1/1000 - 1/3000;. IP: 1:300 Not yet tested in other applications.
Concentration	1 mg/ml
Purity	≥90%
Storage Stability	-20°C/1 year
Synonyms	HA epitope tag; hemagglutinin
Observed Band	15kD
Cell Pathway	
Tissue Specificity	
Function	
Background	The HA tag (Y-P-Y-D-V-P-D-Y-A) is derived from an epitope (amino acids 98-106) of the influenza hemagglutinin (HA) protein. HA tag is used as a general epitope tag in expression vectors for many recombinant proteins. The presence of HA tag facilitates the detection, isolation and purification of recombinant fusion proteins.
matters needing attention	Avoid repeated freezing and thawing!
Usage suggestions	This product can be used in immunological reaction related experiments. For more information, please consult technical personnel.



Products Images



Western Blot analysis using HA-tag Polyclonal Antibody against HEK293 cells transfected with vector overexpressing HA tag (1) and untransfected (2). Antibody was diluted at 1:2000. Secondary antibody(catalog#:RS0002) was diluted at 1:20000

IP analysis of HA-tag Polyclonal Antibody

